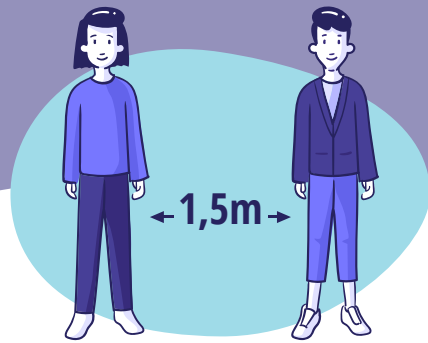


How to stay safe in this building!



Maintain sufficient distance



Wash your hands when leaving and entering your home



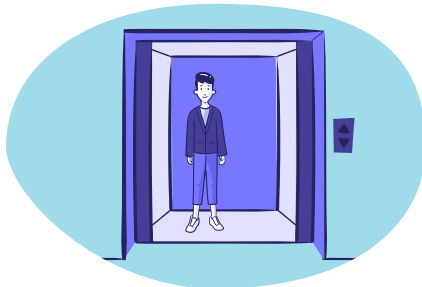
Use your own protective equipment



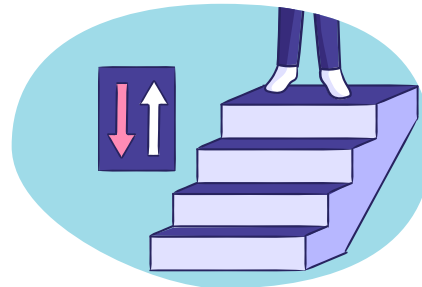
Do not shake hands



Cough or sneeze into a paper tissue



Limit the number of people who use the lift, keep your distance and stand back to back



Observe priority rules on staircases

For cleaning service(s)

- Respect the cleaning arrangements that apply in the building.
- Pay extra attention to cleaning/disinfecting surfaces that people frequently come into physical contact with.

Any questions?

Consult the sector guide and the government guidelines on www.sf323.be/corona or www.info-coronavirus.be.

Edition Sociaal Fonds for the real estate sector, version 4th of May 2020